



AGIS
Protecting Children In and From Prisons
2004-2006

LITHUANIA

Report, 2005

Dr. Svetlana Gečėnienė
Laura Kietytė
Agnė Matijaškaitė

CONTENTS

I. Introduction to the Juvenile Justice System in Lithuania	3
1.1. Particularities of juvenile criminal responsibility	3
1.2. The principles of criminal proceedings where a juvenile is a party	4
1.3. Remand measures	6
1.4. Educational measures	7
1.5. Penalties	9
1.6. Juvenile administrative responsibility	11
<i>Scheme1: Educational Measures and Penalties under the Criminal Code of Lithuania</i>	13
<i>Scheme2: System of Correctional Institutions for Juveniles</i>	14
1.7. Correctional institutions for juveniles in Lithuania:	15
A. Kaunas interrogation facility and penitentiary	15
B. Special educational and supervision facilities (Special children’s educational and care homes)	16
II. Protecting Children IN and FROM Prisons	17
2.1. Safeguarding juvenile/children in prison (under 18)	17
2.2. Re-settlement – sentence/care plan during the sentence to prepare for release	19
2.2.1. Learning opportunities in prisons (penitentiaries)	19
<i>Scheme 3: System of Occupation for Confined Juveniles</i>	20
2.2.2. Sentence/care plan during the sentence to prepare for release	21
2.2.3. Support after release:	22
(i) Financial benefits	22
(ii) Work of the 3rd sector	23
2.3. Employment/education opportunities past release	24
2.4. Mental health, medical needs	25
2.5. Specialist workers in other sectors	26
2.6. Training the staff	27
2.7. Activities that prevent imprisonment	28
<i>Scheme 4: Juveniles convicted to main punishments</i>	29
2.8. A typical staffing structure - specialists, staff ratios	29
III. Sources and Links	30
IV. Statistical Data	31

I. INTRODUCTION TO THE JUVENILE JUSTICE SYSTEM IN LITHUANIA

1.1. Particularities of Juvenile Criminal Responsibility

A coherent reform of juvenile justice in Lithuania has started in 1999 when UNDP/Lithuania, in collaboration with the Government of the Netherlands, has supported **Juvenile Justice Programme**, providing with assistance to the Government of the Republic of Lithuania in creating a coherent criminal juvenile justice strategy, based on the respect for human rights and emphasizing rehabilitation of juvenile offenders. The Programme encompassed the reform of the system of sanctions for juvenile offenders; the institutional reform of the juvenile justice (police, prosecutor's office, courts, places of confinement) and establishment of an institution assisting the ex-confined to reintegrate into society; awareness raising on the issues of juvenile justice; as well as stimulation of re-integration of juvenile offenders into society. Under the first aforementioned Programme (1999 - 2002) analysis of the existing legislation has been carried out and conceptual basis for juvenile justice reform has been developed. Recently, the second Programme (2004-2008) was adopted.

The Criminal Code of the Republic of Lithuania¹, which was adopted on September 26, 2000 includes a separate chapter (Chapter XI) regulating the Particularities of the juvenile criminal responsibility. The fact that there is a separate chapter in the Criminal Code regulating juvenile criminal responsibility emphasizes the exceptional status of criminal responsibility of juveniles in respect of criminal responsibility of adults. Chapter XI of the Criminal Code establishes the purpose of juvenile responsibility and extends the age limits of persons to whom the provisions of the chapter are applicable; considers educational measures towards juveniles including their imposition, duration and consequences of non-implementation. It also characterizes the imposition of punishments on juveniles; considers the features of suspended sentence, release from criminal responsibility, and early release from penalty for juveniles.

The purpose of the structural characteristics of juvenile criminal responsibility is *to make sure* that criminal responsibility of a juvenile corresponds their age and social maturity; *to limit* the number of imprisonment punishments and *expand* the possibilities to apply educational measures for juveniles; *to help* a juvenile change the way of his life and behaviour while combining the punishment for the criminal act, his/her personality's education and elimination of causes of the illegal behaviour; to prevent new criminal acts committed by juveniles (Article 80).

¹ The Criminal Code of the Republic of Lithuania// The State News, 2000, No. 89-2741.

Age of criminal responsibility. Pursuant to the Criminal Code of Lithuania, a person is deemed to be responsible who prior to committing a crime or a criminal offence has reached **the age of 16**, and in cases of some offences (foreseen in Paragraph 2 Article 13 thereof: murder, bodily injury causing heavy health disturbances, rape, sexual harassment, theft, robbery, property extortion, destruction of or damage to property, seizure of firearms, ammunition, explosives or explosive substances, seizure of drugs or psycho-tropic substances, damage to means of transport or certain equipment therein) - **14 years**.

The educational measures set forth in the provisions of the Criminal Code may be applied also to a person who, during the commitment of the offence, **was over 18, but was under 21**, if the Court, considering the type of the offence, motives, as well as other circumstances of the case and, if necessary, the explanations or a conclusion of a specialist, decides that such a person in the approach of his social maturity equals to a juvenile.

1.2. The Principles of Criminal Proceedings where a Juvenile is a Party

Criminal proceedings are a complicated sphere of social life, from which juveniles should be safeguarded, in order not to be influenced by any criminal case. However, juveniles often become victims, witnesses of crimes and, unfortunately, commit crimes themselves. In juveniles' criminal cases the law principle *in dubio pro reo* (all doubts in behalf of the accused) is rephrased to the principle *in dubio pro educatione* (in case of doubt the decision should be made with regard to the educational interests of a juvenile (not to the punishment)).

Requirements for criminal proceedings where a juvenile is a party of the case:

- I. **Flexibility of proceedings, less formalized** – too severe formalities can reduce the educational effect of proceedings – **Informality v. Formality**;
- II. The participants of proceedings (legal authorities, advocates (attorneys)) should have pedagogical skills. The presence of social workers as participants of proceedings is highly required – **Social intermediation of criminal proceedings**;
- III. **Short proceedings** – the process should be simplified, the possibilities of appeals should be narrowed down.
- IV. **Maximum individualization of the process** – the circumstances (concerning the accused juvenile) of every case should be examined very carefully.

The principles of juveniles' criminal proceedings

- Constitutional principles
- International instruments
- National regulations of proceedings
- Other regulations

Fair trial

All subjects of proceedings should help a juvenile to exercise his/her rights. Especially high requirements are raised for advocate (attorney) of a juvenile; an investigator, a prosecutor and a judge have to exercise their duties in such a way that the educational effect of a proceeding was not obscured.

The specialization of the juveniles' judges and prosecutors was brought into practise in district and regional courts of Lithuania in 1999 by the orders of the Minister of Justice of the Republic of Lithuania and the General Prosecutor of the Republic of Lithuania.

Social workers should take an important role in juveniles' criminal proceedings: they should find the best educational methods for concrete juvenile and suggest them to the judge to impose them on a juvenile. Social workers should be involved in a proceeding as early as possible and give their conclusions. Social workers should help and advise juveniles after the ending of the criminal case also, when the judge imposes other measures (educational measures) instead of penalties. This is a weak part of the juvenile process, though.

Expedience (individualization of every case)

The prosecutor in certain juvenile cases should strive to finish the case without sending it to the Court. The Court, who hears the criminal case where the accused person is a juvenile, should consider possible alternatives before passing the "guilty" verdict.

Restriction of the Publicity

Cases where the accused persons are younger than 18 years *can be* tried in closed sessions (The Criminal Procedure Code, Article 9). Confidentiality should be retained during the pre-trial stage as well.

Persons under 16 are not allowed to attend the court session hall except they are accused, victims or witnesses (Article 9).

Proportionality

Before imposing any measure restricting rights of a juvenile one has to be ascertained if that measure is necessary and appropriate. It is extremely important while deciding about the application of the remand measures.

Right to Defence

The Criminal Procedure Code establishes supplementary guarantees for the right to legal defence of a juvenile. A defender is obligatory in cases where the suspected or accused person is a juvenile (Article 51). The refusal from the defender of a juvenile does not oblige the pre-trial officer, prosecutor or the Court (Article 52).

1.3. Remand Measures

*The Criminal Procedure Code of the Republic of Lithuania*² does not forbid applying any remand measure to juveniles, which can be applied to adults. The Criminal Procedure Code covers these remand measures: detention, home arrest, obligation to live apart from the victim, deposit, taking the documents of the suspect, obligation to register periodically at the police office, written commitment not to leave the residence without the permission of the prosecutor or the Court. The application of most of those measures is not expedient for the juveniles, so the one specific measure applied for juveniles in the pre-trial stage which is sending a suspect juvenile to their parents, guardians or other natural and legal persons taking care of children for supervision (Article 138) should be applied generally. In order to apply this measure, the written obligation ensuring that the suspected juvenile behaves properly and comes to the pre-trial officer, prosecutor or judge if invited shall be produced by the person to whom the juvenile is sent. The persons to whom juvenile is sent are informed about the responsibility in case the suspect juvenile avoids pre-trial or court procedures. A fine can be imposed to the persons taking care of a suspected juvenile if he/she avoids the pre-trial officer, prosecutor or judge.

Detention is the measure waiving personal liberty of a juvenile at the pre-trial stage. The Criminal Procedure Code sets the same grounds and conditions for detention as well as the same detention infliction rules for juveniles and adult suspects. The only difference lies within the terms of the detention. The common principle is that the detention can not be applied for more than six months. For the first time, the detention can be applied for not more than three months. If the case is especially complicated, the judge can prolong the term of the detention; however, the term of detention during all pre-trial procedure can not last more than 18 months for adult suspects and not more than 12 months for juveniles.

² The Criminal Procedure Code of the Republic of Lithuania// The State News, 2002, No. 37-1341, No. 46.

The Law on Pre-Trial Detention³ of the Republic of Lithuania establishes the procedure and conditions of keeping persons in custody. The main particularities for juveniles are as follows:

- Minors shall be kept separate from adults. When assigning minors to cells it shall be necessary to take their age, physical and mental development, and moral properties into consideration. By way of exception, upon obtaining the prosecutor's sanction, adults may be kept in the cells with minors;
- Untried prisoners have at least one hour of exercise in open air. Minors and women shall be allowed two daily periods of exercise, one hour long each;
- Minors, pregnant women, nursing mothers, as well as sick persons shall be provided with better accommodation and everyday-life conditions.

1.4. Educational Measures

Educational measures *are applied* for a juvenile who committed a criminal offence or *can be applied* for a juvenile who committed a crime and was exempted from criminal responsibility or exempted from a punishment. The judge can impose not more than three interrelated educational measures (Article 82)⁴. The judge can impose a penalty for a juvenile if he/she commits two or more criminal offences. Educational measures applied for juveniles in Lithuania are:

1. Warning;
2. Compensation for damage to property or elimination thereof;
3. Non-remunerated work of educational nature;
4. Placing juvenile under the care of his parents or other natural and legal persons taking care of a child for supervision and education purposes (from 6 months to 3 years);
5. Restriction of juvenile's behaviour;
6. Sending a juvenile to a special educational-disciplinary institution (for a period from 6 months to 3 years).

- *Warning* can be imposed for a juvenile as a self-sufficient educational measure or together with other educational measures (Article 83).

- *Compensation for damage to property or elimination thereof* can be imposed as educational measure for a juvenile only if he has/she income, which he/she independently disposes or he/she can eliminate the damage by his/her own work. Damage to property has to be compensated or eliminated by the work of a juvenile during the term appointed by the judge (Article 84).

³ The Republic of Lithuania Law on Pre-Trial Detention, No. I-1175, 1996 01 18.

⁴ The Criminal Code of the Republic of Lithuania// The State News, 2004, Nr. 108-4030 (2004-07-13).

- *Non-remunerated work of educational nature* can be imposed for at least 20 to 100 hours in the health care, care/ward or other governmental or non-governmental institutions or organizations where labour can have educational influence. Non-remunerated (Public) labour can be imposed only if a juvenile gives his/her consent. This educational measure can not be imposed if juvenile is sent to a special educational-disciplinary institution (Article 85).

- *Juvenile's behaviour can be restricted* at least for 30 days to 12 months. The judge can oblige a juvenile to stay at home at the determined time, to study, to continue studying or working, to acquire certain knowledge or learn prohibitions (safe traffic, pupil's regulations, etc.), to complete a course of treatment from alcoholism, drug-addiction or venereal disease (this obligation shall be imposed on his parents' or guardians' request if a juvenile gives a consent), to participate in social development or rehabilitation measures organised by state or non-governmental bodies and organisations.

The judge can forbid the juvenile to gamble, to engage in certain activities, to drive a motor vehicle (motor-cycle, self-propelled machine, etc.), to attend places which influences negatively on the behaviour of a juvenile or to communicate with people having negative authority on him, to change the place of residence without notification of the institution controlling the implementation of this measure (Article 87).

- *Sending a juvenile to a special educational-disciplinary institution* is the most severe educational measure established in the Criminal Code of Lithuania. It is just an expedient choice to apply the educational measure (short restriction of the personal liberty and isolation) when it is impossible to apply other educational measures or they were applied before and did not give any desirable results, as well as when there is information that the juvenile is inclined to commit criminal acts repeatedly, thus the educational influence with no restriction of personal liberty is insufficient. A juvenile can be sent to a special educational-disciplinary institution for a period from 6 months to 3 years but not longer until the juvenile ages 18 years. The period of staying in this institution is fixed by the judge in every particular case. The judge evaluates the personality, the criminal behaviour and other circumstances before making a decision to apply this educational measure. Sending a juvenile to a special educational-disciplinary institution can be also applied with other educational measures, for example, warning or the compensation of damage to property or its elimination (Article 88). *

*See also page 16 about the Special educational and supervision facilities (Special children's educational and care homes).

1.5. Penalties

Not all penalties, which are applied to adults, can be applied to juveniles. The international instruments prohibit the imposition of the life imprisonment for juveniles. Certain penalties can not be applied to juveniles because of their age. In Lithuania, penalties applied to juveniles have the same content as penalties applied to adults. The main differences are the limits of penalties and the particularities of the imposition.

The Criminal Code of Lithuania establishes the following catalogue of the penalties, which can be applied to juveniles (Article 90):

- 1) *Public works* (not more than 240 hours of public works);
- 2) *Fine* (a fine can be imposed only on a juvenile, who works or owns property);
- 3) *Limitation of personal liberty*;
- 4) *Arrest* (from 5 to 45 days of arrest);
- 5) *Termed imprisonment*. This penalty for a juvenile should not exceed 10 years.

A judge before imposing penalty on a juvenile considers the following circumstances: living and education conditions of a juvenile; health state and social maturity of a juvenile; sanctions applied before and their efficiency; behaviour of a juvenile after the commission of crime.

Limitation of personal liberty (Article 48): the same article is applied to both juveniles and adults. Before the enactment of new Criminal Code this penalty was not known for the Criminal and Penitentiary Law in Lithuania. Limitation of personal liberty is an alternative to the termed imprisonment. As an alternative, it plays an important social-legal function. This penalty is applied to the juveniles whose criminal acts were not very dangerous to the society (the principle of the differentiation of penalties). The content of the limitation of personal liberty is the set of prohibitions and obligations applied to the juvenile who committed a criminal act.

There are no particularities of the imposition of this penalty in comparison to the imposition conditions to adults.

People who are punished with the limitation of personal liberty can be obliged:

1. not to change the place of residence without the notification of the judge or the institution executing the penalty;
2. to follow the obligations and observe prohibitions of the judge;
3. to report on the fulfilment of obligations and restrictions.

The judge can impose one or more prohibitions or obligations. The judge can forbid:

1. to visit certain places;
2. to communicate with certain people or groups of people;
3. to possess, use, obtain, keep or deliver certain things to other people.

The judge can set out the obligation:

1. to be at home at certain time;
2. to compensate the real damage or a part thereof or eliminate the damage by his/her work;
3. to start working or register in the jobcentre, start learning;
4. to take treatment from alcoholism, drug-addiction, toxicology or venereal disease when the convicted gives a consent;
5. to work for not less than 200 hours during the term appointed by judge but no longer than the period of the limitation of liberty in a health-care, care institutions or the non-governmental organizations which take care of disabled, old or other help-requiring people.

Arrest (Article 49): An arrest is a short deprivation of liberty. An arrest of an adult can last from 15 to 90 days for the crime and from 10 to 45 days for the misdemeanour. A juvenile can be punished from 5 to 45 days of an arrest. Juveniles should be held separate from adults in custodies. The administration of custody should organize the social rehabilitation of juveniles. The legislator does not set any age limit for that penalty; therefore it can be imposed for the 14-year-juveniles as well.

Termed imprisonment: Termed imprisonment is the most severe penalty for a juvenile; it is applied as *ultima ratio* measure, preventing a juvenile from committing other criminal acts. Life imprisonment is not applied to juveniles as international instruments forbid it. The length of the termed imprisonment for adults is from 3 months to 20 years. Termed imprisonment should be imposed on a juvenile only if there is a reason to think that other penalties will be insufficient to change the criminal habits of this juvenile or this juvenile commits a serious or a very serious crime. The minimum term of deprivation of liberty is half of the minimal penalty provided in the sanction of article for which breach juvenile is adjudicated (not more than 10 years).

The Court decides about the penalty's execution place. The juvenile exercises the termed imprisonment in juveniles' correction facilities. Juveniles are divided in the „ordinary group“ and „lightweight group“. There are some differences in the regime these two groups. For example, juveniles who live under the conditions of the „ordinary group“ have a right to get one post-parcel, one short and one long meeting in a period of two months, while juveniles in a „lightweight group“ can enjoy those rights twice over the same period of time.

1.6. Juvenile Administrative Responsibility

The violation of Administrative Law is a guilty (intentional or negligent) action or inaction contrary to law making an attempt to state's or public order, property, political rights or freedoms, settled administrative order, for which the laws foresees the administrative responsibility⁵. In Lithuania the administrative responsibility arises if the violations according the existing law are not the ground for the criminal responsibility. Administrative responsibility arises for persons who turn 16 years old before the breach of the Administrative Law⁶.

The Code of the Administrative Law Violations establishes few particularities for the administrative responsibility of juveniles. Most of the Code's provisions are applied both to adults and juveniles.

For illegal obtaining or keeping small amounts of narcotics or psychotropic substances without a purpose to sell them or distribute in other way, as well as the usage of the narcotics or other psychotropic substances without the appointment of a doctor (Article 44, part 3); hooliganism (Article 175); breach of the settled order for obtaining and handling civil pyrotechnics measures (Article 176¹, Part 3); drinking alcoholic beverages in public places (Article 178, part 4); disturbance of public peace (Article 183, part 3) the administrative responsibility arises for parents or guardians instead of juveniles (14 -16 years old) who commit those acts.

Before imposing an administrative sanction, the nature of a violation, personality of the violator, extenuating and aggravating circumstances should be taken into consideration.

All the administrative sanctions except the administrative arrest can be applied to a juvenile for a violation of Administrative Law (Article 21¹). Administrative sanctions for a juvenile include: warning, fine, *confiscation* of an item, which was the instrument or the direct object of the administrative law violation, *or* income from the administrative law violation, deprivation of the special right vested to a person, suspension from the work (functions). A juvenile can be ordered no more than the half of the fine covered in the Code of the Administrative Law Violations (Article 24). When juveniles from 16 to 18 years old do not have their own income, the fine shall be recovered from their parents or other persons serving the place of parents⁷.

There is a general principle in the Administrative Law system that an administrative law violation case is heard according the violation's perpetration place, but juveniles, their parents or other persons serving the place of parents Administrative Law violations are heard according the violator's living place.

⁵ The Code of Administrative Law Violations, Article 9. Nr. [L-2589](#), 1992.05.26, News, 1992, Nr.21-610.

⁶ *Ibid*, Article 12. News, 1985, Nr. 1-1.

The project of the Code of the Administrative Law Violations

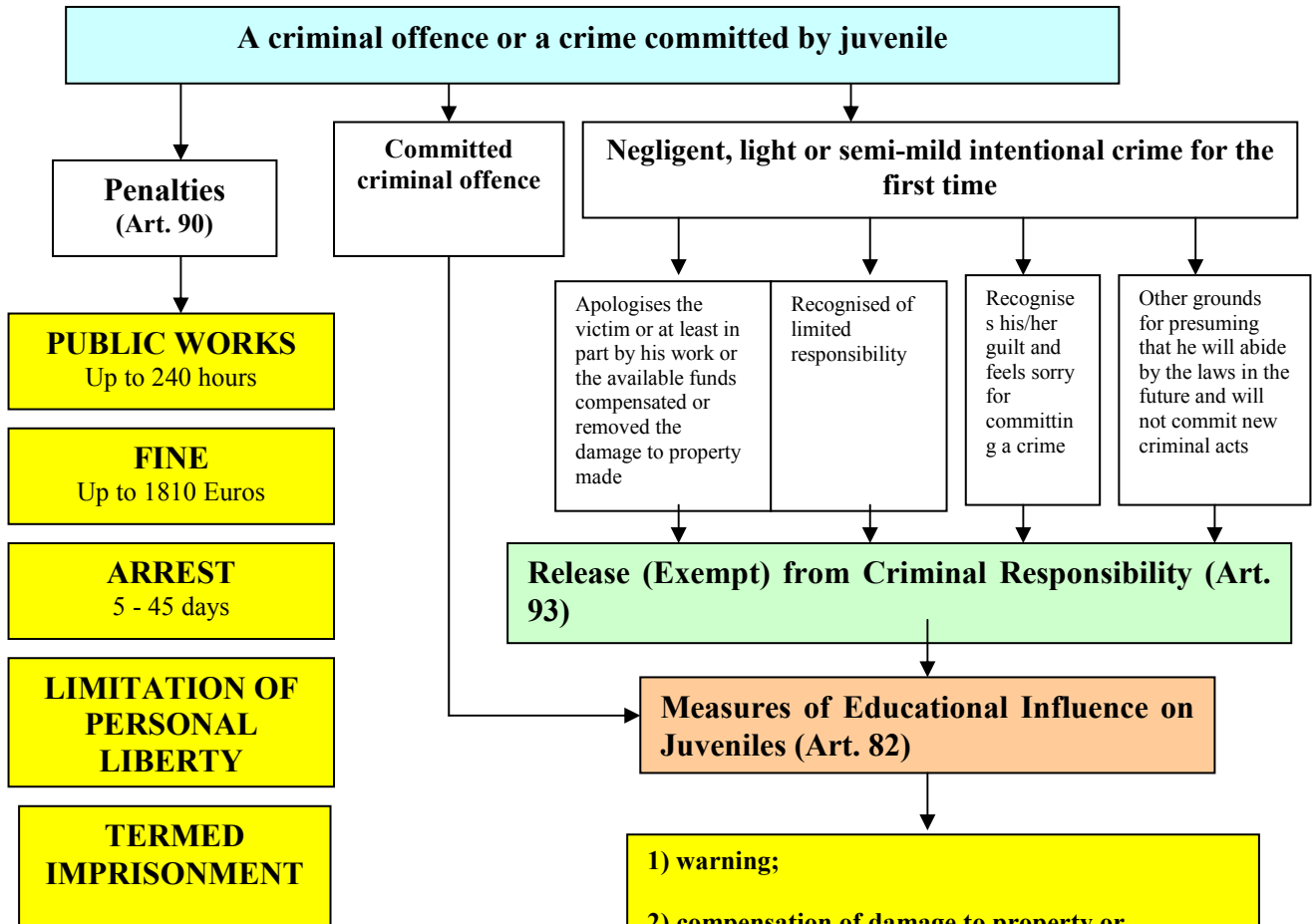
The new project of the Code sets the purposes of the juvenile administrative responsibility. The purposes are:

- To make sure that administrative responsibility corresponds to the age and social maturity of those persons;
- To help a juvenile to change the way of life and behaviour while combining the sanction for the administrative law violation with the education of his/her personality and elimination of reasons for the illegal behaviour conduct.
- To deter a juvenile from new violations of the Administrative Law or criminal acts.

The project of the Code of the Administrative Law Violations establishes only three possible sanctions for juveniles, which are a warning, a fine and public works (not more than 50 hours). According to the laws of Lithuania, educational and other measures can be applied to juveniles who breach the legal regulations systematically. A fine can be applied only to a juvenile who has a paid job *or* has his/her own income.

⁷The Code of Administrative Law Violations, Article 313. Nr. [VIII-1543](#), 00.02.17, New., 2000, Nr.22-552 (00.03.15)

**Scheme 1. Educational Measures and Penalties under the Criminal Code of Lithuania
(Chapter XI)**

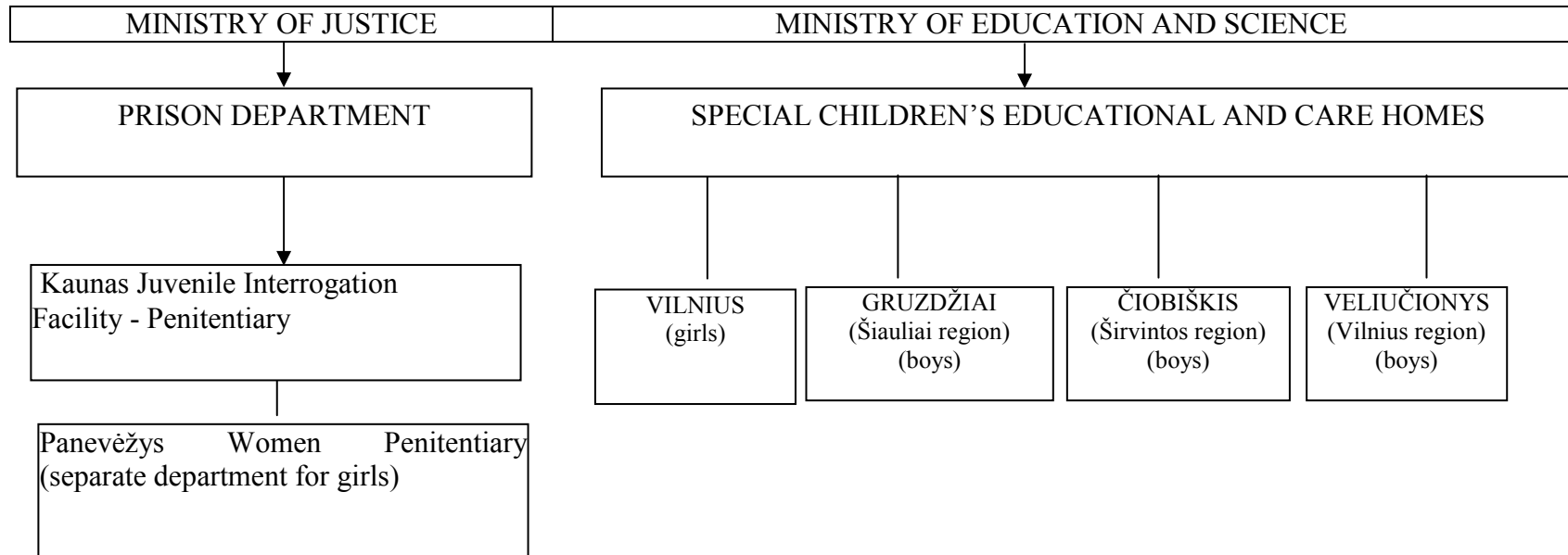


- Measures of Educational Influence on Juveniles (Art. 82)**
- 1) warning;
 - 2) compensation of damage to property or elimination thereof;
 - 3) non-remunerated work of educational type (20-100 hours);
 - 4) disposal to the care and supervision of parents or other natural or legal persons, taking care of children (6 months – 3 years);
 - 5) restriction of behaviour (30 days – 12 months);
 - 6) relocation to a special educational institution (6 months – 3 years)

Obligations:
 to stay at home at the established time;
 to study, continue studying or working;
 to master certain knowledge or prohibitions (safe traffic, pupil’s regulations, etc.);
 to complete a course of treatment from alcoholism, drug-addiction or venereal disease. This obligation shall be imposed if a juvenile gives consent at the request of his parents or guardians;
 to participate in social development or rehabilitation measures organised by state or non-governmental bodies and organisations;

Prohibitions:
 to gamble;
 to get involved in certain activities;
 to drive a motor vehicle (motor-cycle, self-propelled machine, etc.);
 to attend places with negative influence on a juvenile or communicate with people exercising a negative effect on him.
 to change the place of residence without knowledge of the institution controlling the fulfilment of this measure.

Scheme 2. SYSTEM OF CORRECTIONAL INSTITUTIONS FOR JUVENILES



1.7. Correctional Institutions for Juveniles in Lithuania:

A. Kaunas Interrogation Facility and Penitentiary

Kaunas Interrogation Facility and Penitentiary (hereinafter - Kaunas JIF-P or Institution) is situated in Kaunas, about 100 kilometres to the West from Vilnius. Institution has been established on the 6th of September in 1968 and was named the Correctional Works Facility of Kaunas. This is *the only* institution of this kind in Lithuania. The name and jurisdiction of the Institution were changed time and again from its establishment. Building of the Juvenile Interrogation Facility (JIF) was completed and it started functioning in August, 1998. Since the 1st of May 2003, after the new Criminal Code of Lithuania and Penalty Execution Code were passed, the Institution was renamed to Kaunas Juvenile Interrogation Facility - Penitentiary according to the Lithuanian Government decree. A limit of places for Institution was confirmed: P - 222, JIF - 133 places.

Kaunas JIF-P is within the jurisdiction of the Prison Department of the Ministry of Justice of Lithuania. This institution exercises the following functions: detention - arrest of juvenile convicts; imprisonment of juvenile convicts; reassurance of health care and living requirements for arrested and imprisoned juveniles as provided by law; preparation of juvenile convicts for integration into society upon completion of their prison sentences; guarantee of general education and vocational training; organization of cultural and sport events as well as devotion for juvenile convicts.

The Penitentiary (further - P) is a place where convicted juveniles (aged 14-18) serve their term of imprisonment. Having reached the age of 18, they are transferred to adult imprisonment facilities. Upon Prison Department Director ruling, the juveniles who with decent behaviour can be left to serve their sentences in the Institution until they are 21.

Since the 1st of May 2003, when the new Criminal Code, the Criminal Procedure Code and the Penalty Execution Code came into effect, the Institution implemented the following legal reforms: all juvenile convicts were transferred to the ordinary group (Departments 1 - 8), later on, the ones who had no disciplinary punishments and had served not less than 6 months of their prison sentence (including custody in Interrogation Facility) were transferred to the lightweight group (Departments 9 - 12). Juvenile convicts, who have constantly been violating internal order rules, making negative influence on others, who have been aggressive and have had disciplinary punishments were left in the ordinary group.

Juveniles who have been commenced and who exercise detention as a remand measure as well as those who are waiting for the decision of the Court coming into force are placed in the Juvenile Interrogation Facility (hereinafter - JIF).

A territory of the Institution is hedged in the wall of 3 meters high, facade - 6 meters high, circumference - 800 meters long. The whole territory is divided into three sectors isolated from each other:

Penitentiary, where juvenile convicts live and learn;

Juvenile Interrogation Facility, where juveniles exercise detention - arrest or wait for the decision of the Court to come into force;

Production Premises, where convicts work and acquire labour skills.

There is the Department of Kaunas Mechanics School in **Productive Premises**, where convicts may acquire the professions of carpenter or tailor. At the end of the year 2003 the assets of productive section were transferred to the state enterprise under 1st Correctional Facility of Pravieniskes by the Governmental Decree of the Republic of Lithuania. In accordance with Loan Agreement, it received productive premises, where there is a bakery of bread and pastries, as well as laundry, where the convicts of the institution work.

In Correctional Facility, there are the following rooms: of institutional Director, Deputy Director, Record Department, Department of Social Rehabilitation, Psychological Group, Department of Security and Supervision, Household Department, employees of Service of Internal Investigations, Service of Health Care, quarantine premises for newly-arrived, rooms for dates of long duration, room for dates of short duration, shop, canteen, kitchen, discipline isolator, 1st Secondary School of Kaunas District, "Centre for Leisure and Education – Library", "Centre of Crises of Convicts", sport-hall, assembly hall, chapel, lodging premises of the convicts, bathhouse, and barber shop.

There are the following rooms in Interrogation Isolator: of institutional Director, Deputy Director, Department for Administrative Issues, Personnel Department, Accountancy Department, Department of Social Rehabilitation, Psychological Group, Record Department, Department of Security and Supervision, Service of Internal Investigations, employees of Service of Health Care. There are the wards in the 3rd – 6th floors, where the detained (convicted) juveniles are kept.

B. Special Educational and Supervision Facilities (Children's Special Educational and Care Homes)

The decree of the Government of the Republic of Lithuania⁸ foresees that children's special educational and care homes function as a part of the educational system of Lithuania as rehabilitation-correctional state's institution of common education performing special regime for asocial and delinquent juveniles. *Sending a juvenile to a special educational-disciplinary institution* is the most severe educational measure set out in the Criminal Code of Lithuania. There are 4 institutions of the aforementioned type in Lithuania, 3 for boys (in Veliučioniai, Čiobiškis and Gruzdžiai) and 1 for girls (in Vilnius).

Special children's educational and care homes exercise following functions:

1. shapes the juveniles' common work, person's hygiene, cultured communications skills;

⁸ Decree No. 643 of the Government of the Republic of Lithuania concerning the special children's educational and care homes temporal regulation// The State News, 1995, No.39-971.

2. strives to reveal and foster the good inner and physical features of the juveniles with regard to their character, age, health characteristics;
3. motivates juveniles to study, allows them to gain the major (10 grades) and secondary (12 grades) education;
4. provides juveniles and their families with pedagogical and psychological aid;
5. helps juveniles acquire virtue basic;
6. helps juveniles solve inner conflicts, self-actualize, realize their needs, skills, learn how to cope with their problems, orient in the social environment.

The structure of the special children's educational and care homes:

1. section of common education;
2. section of leisure and rest;
3. section of working- manufacturing activities;
4. social-psychological service;
5. medical service;
6. service of household-financial activities;

Children's special educational and special houses have a wide range of workers: teachers, class mentors, leaders of extra-curriculum, activities, teachers of profession, craftsmen, psychologists, social pedagogues, medical staff and other specialists.

II. PROTECTING CHILDREN IN AND FROM PRISONS

2.1. Safeguarding Juveniles/Children (under 18) in Prison: Emotional, Physical, Sexual, Social and Support from Neglect

During the last 2 years conditions of confinement of juveniles in penitentiaries have improved significantly. Decrease in prison population by almost 200 percent (from 250 to 73 juveniles) as well as additional financial means for the renovation of premises (living premises, lavatories, sport halls, etc.) were the main factors of the improvement. The measures used helped decrease problems related to safeguarding juveniles.

There are no special safeguard measures implemented in penitentiaries. Every department of a penitentiary is obliged to guarantee the safety of juveniles in a penitentiary as well as to assist them in solving their personal problems. For example, the Psychology departments are vested in with the following functions:

- Analysis of the psychological climate in certain groups of the convicted;
- Analysis of personality needs of the convicted, risk factors and psycho-social situation;
- Prevention of psychological crises, suicides and intentional self-injuries.

There are several special programmes for prevention of violence implemented in penitentiaries:

Violence prevention program. Group: juveniles tending to violence. They are selected by Security and Supervision Department and Internal Investigation Service officers. The aim of this program is to decrease the number of violence cases among convicted and imprisoned juveniles. 25 persons participated in the program.

Social Promotion Program. Group: orphans, who arrive from sheltered houses and asocial families. The program is intended to provide them with grants, clothes and footwear. In 2003, 265 juveniles arrived to the institution from dissonant families: orphans (18 at the Penitentiary, 9 at the Interrogation Facility), juveniles from sheltered houses or from parents with restricted rights to their children (73 at the Penitentiary, 35 at the Interrogation Facility), juveniles from asocial families, who had no visitors (63 at the Penitentiary, 20 at the Interrogation Facility), living with one of the parents (47 at the Penitentiary). 28 onetime monetary grants were provided at the Interrogation Facility and 88 at the Penitentiary during the year.

Self-Injuries Prevention Program – Participating group: juveniles, who tried to harm themselves, to suicide or who are known for attempted suicide while being in freedom. The psychologist or psychiatrist of the institution refers to such juveniles as belonging to the risk group. During the year of 2003, 18 juveniles at the Penitentiary, 103 at the Interrogation Facility, 23 imprisoned (and being in the attempted suicide list) participated in the program. Persons with unstable psychics, who tried to harm themselves, to commit suicide while being in freedom, are referred to as belonging to the list as well. This information is sent to other institutions and juveniles are supervised more intensively, they receive individual psychological aid.

Starting from 2005, all juveniles participate in the aforementioned programmes.

One of the most serious problems is self-injuries of juveniles. The reason leading juveniles to harm themselves was their wish to get into hospital and thus escape from the environment of penitentiary. Since 2003, the number of cases of self-injuries has decreased significantly due to changes in the order of sending prisoners to hospitals (under the new regulation, juveniles are sent to Kaunas hospital just in cases of serious injuries and are treated only with necessary procedures). There are just exceptional cases of harm upon themselves among juvenile prisoners now.

2.2. Re-settlement – Sentence/Care Plan during the Sentence to Prepare for Release

System for bringing juveniles back into society is not elaborated in Lithuania.

Major forms of social rehabilitation in penitentiaries are individual and group work with confined juveniles. The system of “Limited Group Occupation Model” is being created. The system is directed to expand and deepen social and value skills and abilities. The basis of the system is formed from

different programmes aimed at forming social skills (see the Scheme 3 below) that all the confined juveniles are obliged to participate in. It is worth noting that all members of penitentiary staff take part in programmes for social skills (i.e. there are no special units, whole staff of a penitentiary work as a team). Functioning of such a system helps solve occupational problems in penitentiaries.

2.2.1. Learning opportunities inside prison

Under the Article 41 of The Constitution of the Republic of Lithuania education for the person under 16 years old is obligatory.

There is the 1st Secondary School of Kaunas District at the Penitentiary and the Consultative Centre of the 1st Secondary School of Kaunas District in the Interrogation Facility. The medium education level of convicted juveniles currently is 6th - 7th grades; juveniles are educated in small classes.

Few professions are trained in Vocational school: the ones of tailor and woodworker, mechanics and soon bakers will be trained.

In the end of the school year 2002/2003, 73 juvenile convicts received education completion certificates, one - secondary education diploma (at the Penitentiary), one (at the Interrogation Facility) and 8 (at the Penitentiary) - basic education certificate, 63 - vocational school diplomas.

SCHEME 3. SYSTEM OF OCCUPATION FOR CONFINED JUVENILES

WORK THERAPY

- 1. Work in the Laundry
- 2. Work in the Bakery
- 3. Practical work in vocational school
- 4. Work outside a penitentiary
- 5. Housekeeping of a canteen
- 6. Housekeeping of a sport hall
- 7. House keeping of a bath

GROUP OCCUPATION OF THE CONFINED

- Programme of Adaptation
- Programme of Social Support
- Complex programme of changing behaviour in cooperation with parents

Programme for social integration into society

Civil Consciousness Raising Programme

Medical Skills Training Programme

Programme of Music Therapy

Legal Skills Training Programme

Psychological Skills Training Programme

Physical Activity Raising Programme

Programme for Prevention of Alcohol Consumption, Smoking and Drug Using

Social-value skills training programme

Programme of Art Therapy

Programme for Prevention of Violence

Programme for Prevention of Self-Injuries and Suicides

EDUCATION

- 1. School No.1 of Kaunas district
- 2. Kaunas Mechanics School
- 3. Kaunas Builders' school

INDIVIDUAL WORK

Individual work is organised by every member of the staff

2.2.2. Sentence/Care Plan during the Sentence to Prepare for Release.

Such plans are drafted for every juvenile after he/she passes adaptation stage (programme for adaptation) in a penitentiary. Adaptation programmes last for about a month (starts while juvenile are in the quarantine and are finished after he/she is assigned to a division).

The aim of adaptation programmes is to assist a newcomer juvenile to integrate into new social environment and to create preconditions for the successful process of correction.

Adaptation programmes are implemented by social rehabilitation staff (principals of divisions), psychologists and health care staff. Other staffs of a penitentiary also participate in the implementation of the programme (staff for guarding and supervision, staff for internal control, staff for production).

Individual plans for every sentenced person are created by specialists (principals of division) and are based on recommendations provided by a psychologist. Plans encompass information on behaviour abnormalities and needs of a juvenile identified during the period of adaptation as well as means for solving them (which social rehabilitation programmes should be applied to them, etc.). Plans for resocialization can be adjusted and corrected during implementation of the sentence.

Scope of Adaptation Programme:

A. Inquiry into personality of the sentenced and identification of his/her objective needs encompass:

1. Analysis of his/her personal file;
2. Psychological diagnostics;
3. Identification of his/her skills, interests and inclinations;
4. Collecting information on his/her health, dependencies on alcohol, drugs and psychotropic substances;
5. Collecting on his/her specialty, labour experience and level of work capability;
6. Collecting information on his/her social ties, relations with relatives;
7. Identification of his/her views on crime committed as well as views on keeping up to negative traditions of the convicted;
8. Collecting information on his/her material and financial status;
9. Recording the information collected and submitting thereof to specialized agencies.

Information on the convicted and his/her needs usually is collected through analysis of documents kept in his/her personal file as well as data gathered through personal communications, psychological testing, communicating with relatives of the convicted and other legal ways.

B. Introduction of the sentenced to conditions of the carrying of the sentence:

1. General information on the penitentiary;
2. Legal status of the sentenced and prospects of its changes;
3. Legal acts regulating implementation of a sentence;
4. Possibilities and order of meeting material, medical, social, cultural and spiritual needs.

C. Providing with necessary assistance:

1. Psychological consulting and therapy;
2. Health care;
3. Material support;
4. Legal and social consulting;
5. Assistance in solving personal problems.

D. Prevention of negative influence including influence of criminal subculture

1. Providing for safe psychosocial environment;
2. Pedagogical interconnection and correction of behaviour;
3. Participation in target programmes.

E. Drawing up an individual of individual correction plan

1. Formulating objective needs;
2. Identifying correctional measures to be applied.

2.2.3. Support after Release

(i) Financial Benefits

The released juveniles are provided with tickets to their place of residence or with money for tickets, food or money for food and clothes. Those who do not possess enough money in their personal account are provided with a material support up to 1 Minimal Standard of Living (up to 125 Litas (about 36 €)). Starting from May 1, 2003 the handicapped released from penitentiaries who do not possess sum equating at least to 2 Minimal Standards of Living in their personal accounts are paid a material support up to 2 Minimal Standards of Living (up to 250 Litas (about 72 €)).

A person released from penitentiary in order to receive other financial support should apply to social support department of a municipality in two months time after release. Municipalities can provide the released with the following support:

- Provide with a material support up to 125 Litas (about 36 €) (juveniles apply for the latter form of support most often);
- Provide with a living place for a night time in special pensions – *Lodging house* (in case they are established and there are free places in them),
- Provide with free food vouchers ,
- Provide with certificates of temporary registry,
- Provide with a possibility of public works,
- Provide with other assistance (bath, charity, consulting, providing information, social support, etc.).

The released can also register in a labour exchange centre for 6 months after release receiving social support for the unemployed as well as to apply for additional employment guarantees established within the Law on Support for the Unemployed.

(ii) Work of the 3rd Sector

NGOs play an important role in the system of implementation of penalties in Lithuania. Although there is more than 1000 NGO's registered in Lithuania only a small number of them work in the sphere of crime prevention while there are only few that pay attention to implementation of penalties or reintegration of former prisoners into society. The research on the needs of social support to former prisoners and institution providing with it (Law Institute, 2002) has shown that the major field of activities of the aforementioned NGOs is providing social support to former prisoners. However there is only a few of such organizations in Lithuania. Most often NGOs provide charity (72, 4 %) and information on different issues (62, 14 %). Almost half of NGOs providing social support provide possibility of free food services (44, 8 %) and consultancies on different issues (48, 3 %). Some of the NGOs provide temporary living place (13, 8 %).

The most of the NGOs (19) providing social support to the former prisoners do not differentiate former prisoners as a separate target group of their activities and provide social support to them in the same manner as they support other persons requiring social support. Those organizations are active in the field of social care or they are organizations of religious communities. Juveniles are most often supported by different organizations for children, crisis centres and organizations oriented to support families with children.

2.3. Employment/Education Opportunities Past Release.

Prospects for education. Education is compulsory for every child up to 16 years of age in Lithuania, therefore juveniles released from penitentiaries who are younger than 16 must return back to school. They can choose among schools of general education, youth schools (created for children having learning problems and children belonging to risk groups) or vocational training schools.

The major problem faced by released juveniles is the negative attitude of the schools' heads towards children who return from penitentiaries. Sometimes they just refuse accepting them to schools. Problems can also arise to juveniles wishing to return to school in the middle of an academic year. One of the grounds for the heads of schools to refuse accepting a juvenile in the middle of an academic year is that "schoolchildren bag" (sum of money awarded for a pupil per year for school uses) is formed before the start of the year.

Another problem is that many juveniles coming to penitentiaries (or special education and supervision institutions) are pedagogically neglected. The level of their general education does not meet the level supposed to children of their age. They also lack motivation to study. Usually it is hard for these juveniles to study and adopt in the environment of general education school, because the educational programme is too difficult for them and there is an age difference between them and their classmates. The only alternative in these cases is to go studying at a youth school in case there is one in their living district.

Youth schools are devoted to children that could not adopt in schools of general education as well as to children that lack motivation to study. It is an alternative educational institution which provides general basic education through different forms of practical activities, training of basic labour skills and under-professional skills.

Prospects of employment. Employment issues in general are among the most serious problems faced both by adults and juveniles released from places of confinement in Lithuania. Firstly, it is determined by high level of unemployment in Lithuania. Secondly, while in penitentiaries the sentenced loose professional competencies they had possessed, moreover, these persons do not usually have professions meeting demands of the labour market. Thirdly, potential employers usually are not positive towards the released and tend to employ another person in case there is such a possibility. Finally, there is a problem of motivation. Almost 70 percent among all the released who apply to territorial labour markets did not want to find a job being interested in receiving material supports for the unemployed instead.

There are several opportunities available to juveniles:

The first would be to study in a vocational school (these schools provide vocational training as well as some subjects of general education). Juveniles tend to explore this opportunity most often. In some cases administration of a penitentiary or inspector of corrections taking responsibility for a juvenile assist him/her to be released in finding and entering a vocational school. It is rather common for the aforementioned persons to go to a certain vocational school together with a juvenile and speak to directors thereof, etc.

The second, in case a juvenile possess a certificate of basic education (i.e. has graduated 10 grades), he/she can register in a labour exchange centre. Labour exchange centres organize special professional training.

2.4. Mental Health, Medical Needs.

There is a round the clock health service in the penitentiary (during the night time, there is one doctor on duty). There are 13 specialists employed by the health service: doctors of general practice, dentist (half time), psychiatrist (half time), radiologist, and dermatologist. There is an isolator for infectious diseases also (9 beds).

There is no hospital in the penitentiary. Under the Article 174 part 3 of the Code on Administration of Penalties, “In cases when there is a need for necessary specialised medical assistance to a person carrying sentence of deprivation of liberty or a sentence of arrest and there is no possibility to provide him/her with the assistance in medical facilities of penitentiaries or detention facilities, the assistance can be provided in public health care institutions of state or municipalities while guaranteeing guarding for the sentenced”. Therefore, if there is a need for specialized medical assistance, treatment in hospital or consultation, juveniles are taken to the municipality’s hospital or polyclinics.

Newcomers to a penitentiary after sanitary inspection are kept for 14 days in special premises for quarantine. During this period they are inspected by a doctor. The juveniles are also obliged to carry prophylactic inspections for the most serious infectious diseases: AIDS, syphilis, tuberculosis, virus hepatitis B and C. Prophylactic medical inspections of every juvenile are carried twice a year.

From 15 to 20 percent of juveniles coming to correctional facilities encounter mental disorders: depression, mental deficiencies, schizoid personality, drug addicted personalities, addiction diseases, behaviour abnormalities. Almost 80 percent of juveniles have tried (used) drugs before they have been sentenced to penitentiary.

Information on juvenile’s physical and psychic health before coming to a penitentiary is usually collected from documents kept in his/her personal file.

The diseases that are most common among juveniles in penitentiaries are dermatological diseases and stomach diseases. There is a huge need for dentist assistance in penitentiaries; however penitentiaries are not capable of providing it because they have only one half-timer dentist employed. There is a programme of training of medical skills that all the juveniles participate in. The programme is administered by the staff of the medical service.

Problems. Financial means are conferred without taking into account the nature of diseases, i.e. in case a juvenile gets sick with some specific disease (for example diabetes) the penitentiary would not be capable to guarantee medical treatment (prophylactic supervision). A huge part of medical equipment possessed by the penitentiary is out of date.

2.5. Specialized Officers in Other Sectors

The specialization of officers for juvenile cases is not established by the law (only orders for different branches of officers).

By order of the Minister of Justice of 31 March 1999, chairmen of district and local courts were charged with the responsibility for appointing judges for trying, on the first instance and appeal basis, cases in which crimes have been committed by juveniles and civil cases related to children.

By order of the Investigation Department at the Ministry of Interior (MI) (No. TD-109 of 16 June 1999 “Concerning Specialization of Investigation Divisions at Town and District Police Commissariats in Juvenile Criminal Cases”), specific employees of investigation divisions were charged with the responsibility for preliminary investigation in criminal cases involving juveniles (104 investigators in all). A new position was introduced in the Crime Coordination Division of the Criminal Offences Investigation Service of the Police Department at the MI Criminal Police, specializing in the prevention of juvenile crime and exercising coordination and control of operational work of local divisions engaged in the juvenile crime and crime against juveniles. At some police commissariats, officials of the criminal offences investigation units are charged with the performance of special functions, i.e. prevention, investigation and detection of crimes committed by and against juveniles.

In 2000 Commissioner General of the Police Department at MI issued an order “Concerning Specialization of the Criminal Police in Investigating Crimes Committed by and against Juveniles” providing for the appointment at the county centres officials of the Organized Crime Investigation Service and the Economic Crime Investigation Service who would specialize in the investigation of the above mentioned crimes.

Certain problems arise in this sphere. High staff turnover is the most important problem: more than one half of officers who were appointed to investigate juvenile cases in 1999 are no longer working

in the investigation structures. Similar situation is observed in the criminal police. Such high turnover rate determines the importance of ensuring continuation of officers' training.

In June 1999, specialized prosecutors were appointed in the General Prosecutor's Office, district prosecutor's offices, city prosecutor's offices of Vilnius, Kaunas, Klaipeda, Siauliai and Panevezys and local prosecutor's offices of Alytus, Marijampole, Taurage, Telsiai and Utena by orders of the Prosecutor General and chief prosecutors at district/local prosecutor's offices (order of the Prosecutor General "Concerning Pro-active Work of the Prosecutor's Office in Coordinating Actions Against Juvenile Crime and in Protecting Juveniles' Rights and Lawful Interests" dated 8 June 1999).

2.6. Training the Staff

- All staff (mentioned in part 2.5.)

- All departments of custodial units (cooks, instruction officers).

All staff mentioned above is trained under the Juvenile Justice Programme (adopted by the Government in 2004).

Differentiated training programmes, recommendations and a programme for independent skills improvement were elaborated. In organizing skills improvement for specialized investigators and criminal police officials, skills improvement programmes were worked out and approved. On 6 November 2000, four-day (34 hours) skills improvement courses on juvenile criminal justice for specialized officials were launched. Participants include officials from the Organized Crime Investigation Service, the Economic Crime Investigation Service, investigators, inspectors of juvenile matters, with representatives of the Office of the Prosecutor General invited as guests. 14 training cycles were organized; approximately 460 officials received training. Specialized judges are taking part in seminars too. Now such seminars are held periodically.

Seminars on the issues of juvenile psychology and human (child's) rights were also held for police officials having completed the skills improvement courses.

A central databank of special literature and methodical materials is being compiled including documents regulating to juvenile criminal justice (laws and other legal acts of the Republic of Lithuania, international documents, etc.) and other literature required by specialized officers.

Last year Kaunas JIF-P staff had a course of 200 academic hours during 6 months about team work and work with delinquent children. 25 persons from Administration and Social Service participated in the course. As a result of this course, the staff is actively taking part while in the implementation of the new system of group occupation for children staying in this establishment.

The main problems of training mentioned by staff: the system of training does not exist; training mostly is not specialized for those who are working with juveniles, too little attention for social rehabilitation.

Only staff from administration and those who are working directly with children are usually taking part in the training courses.

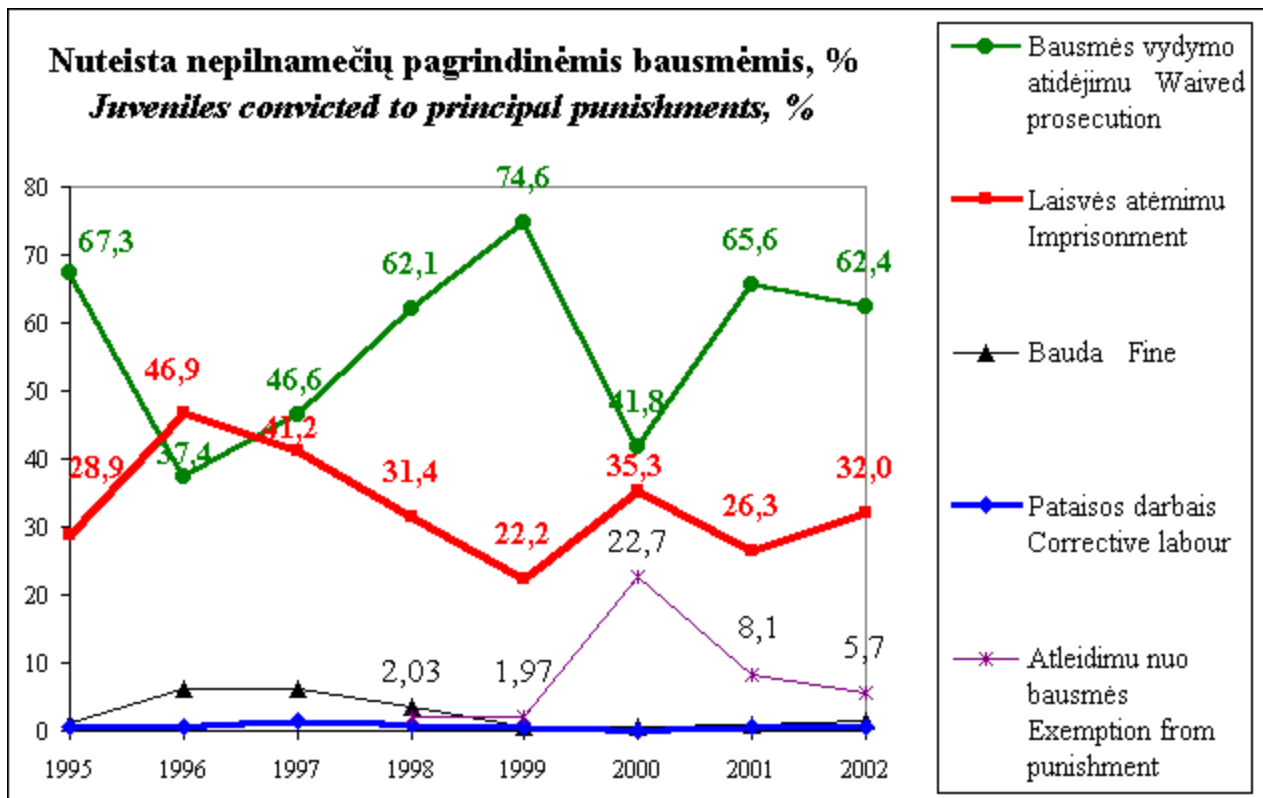
2.7. Activity that Prevents Imprisonment

The imprisonment may be imposed on a juvenile, if the Court has the grounds to presume that other types of punishment for changing the criminal behaviour are not sufficient, or he committed a serious or grave crime. In imposing the punishment in the form of imprisonment, its minimum shall be calculated as from the half of the size of minimum punishment, foreseen in the sanction of the Article of this Code in accordance with which a juvenile is convicted (The Criminal Code, Article 91).

Waived prosecution (suspension of the execution of punishment) is the most popular alternative for imprisonment. The court may suspend the execution of punishment from one to three years in respect of a juvenile on whom penalty, apprehension or deprivation of liberty for an intentional offence was imposed for not longer than four years or for an offence committed by carelessness. The execution of punishment may be suspended if the Court makes a decision that the sufficient grounds for achieving the goals of punishment without a real punishment exist. While suspending the execution of punishment the Court shall impose one or more educational measures except his/ her placement to a special educational institution.

The other alternative of imprisonment is pardoning from criminal responsibility. The Court may pardon a juvenile who committed a negligent, light or semi-mild intentional offence for the first time from criminal responsibility if he:

- 1) Apologized the victim or at least in part by his work or the available funds compensated or removed the damage to property made; or
- 2) Has been recognized of limited responsibility; or
- 3) Has recognised his guilt and feels sorry for committing a criminal act or there are other grounds for presuming that he will abide the laws in the future and will not commit new criminal acts.



When the Court pardons a juvenile from criminal responsibility on these grounds it shall impose educational measures on a juvenile instead.

The new Criminal Code of the Republic of Lithuania establishes more penalties for juveniles, which should be imposed effectively and foresees more possibilities to apply educational measures instead of penalties.

2.8. A Typical Staffing Structure - Specialists, Staff Ratios.

From the Kaunas JIF-P staff scheme, 2004-11-05:

Service	Number of staff	Of them: officers	Of them: employees
Social Rehabilitation Service	16	14	2
Psychological Group	2	2	-
Health Care Service	13,5	1	12,5

SOURCES AND LINKS

1. Kaunas Juvenile Interrogation Facility and Penitentiary. <http://www.nti-adk.lt/apie.html>
2. Annual Reports. Prison Department at the Ministry of Justice of Lithuania.
<http://www.kalejimudepartamentas.lt/?act=veik>
3. NGOs working with children and family. Database of the Seimas of the Republic of Lithuania.
http://www3.lrs.lt/pls/inter/w3_viewer.ViewDoc?p_int_tekst_id=31244&p_int_tv_id=163&p_org=0
4. Research on the Legal Basis of the Establishments of Minimum and Medium Care. Law Institute, 2001. http://www.smm.lt/old/reformos_d/file/nmvpr_ist.doc
5. Information on Special children's educational and care homes. NGO "Child's house".
<http://www.vaikunamas.lt/organizacijos/globosnamai/>
6. Database of Lithuanian legal acts. The Seimas of the Republic of Lithuania. www.lrs.lt

STATISTICAL DATA

(Source: <http://www.nti-pn.lt/statistika.html>,

http://www.kalejimudepartamentas.lt/?item=vkl_at_mt&lang=1)

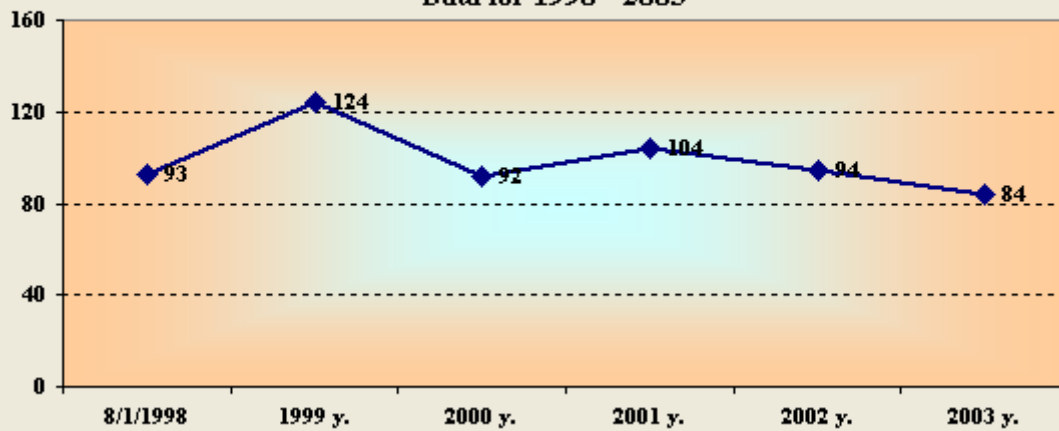
CONVICT DATA (PENITENTIARY)

INDICES	YEAR					
	1998	1999	2000	2001	2002	2003
Average listed convict number per year	294	210	93	99	150	123
Newly arriving convicts	348	229	185	224	251	167
Discharged to freedom	221	138	250	68	102	191
• upon expire of the sentence term	38	38	29	8	15	30
• conditional release from sentence	23	40	19	7	7	6
• conditional release from the detention facility	155	55	22	52	70	144
• pardon	1	1	-	-	-	-
• amnesty	-	2	180	1	10	7
• alteration of sentence	4	2	-	-	-	4
Transferred to the Correctional Works Facility	208	135	39	75	91	46
Average of the term served	1y. 22d.	1y. 2m. 2d.	7m. 29d.	8m. 14d.	9m.	1y. 3m. 15d.
TeiAverage length of the court given sentence	3y. 3m.	3y. 2m. 9d.	3y. 2m. 21d.	2y. 11m.	3y.	2y. 8m.
Average convict age	16,1y.	16,5y.	16,7y.	16,6y.	16,5y.	16,5y.

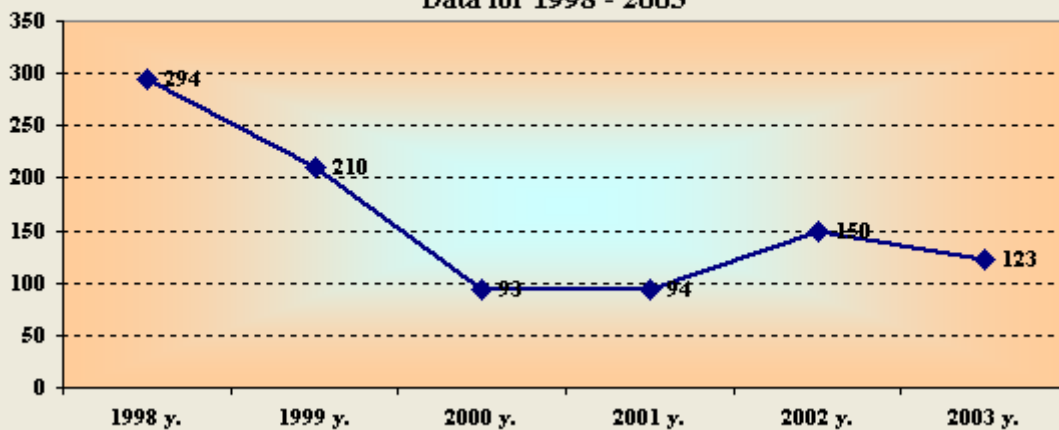
COMPOSITION OF THE CONVICT POPULATION IN TERMS OF TERM OF SENTENCE

TERMS OF SENTENCE	METAI						
	1998	1999	2000	2001	2002	2003	2004
Less than 6 months	3	1	1	0	1	4	4
6 months - 1 year	12	7	4	5	4	3	13
Nuo 1 to 2 years	92	76	35	16	25	35	23
2 to 3 years	83	54	70	21	41	64	25
3 to 4 years	66	46	43	9	29	26	7
4 to 5 years	31	30	20	6	14	20	2
5 to 6 years	27	12	7	6	4	4	3
6 to 7 years	8	8	3	1	1	2	3
7 to 8 years	3	1	1	2	2	3	1
8 to 9 years	5	1	0	2	4	1	--
9 to 10 years	6	3	2	0	0	1	1

AVERAGE LISTED CONVICT NUMBER IN KAUNAS
JUVENILE INTERROGATION FACILITY
Data for 1998 - 2003

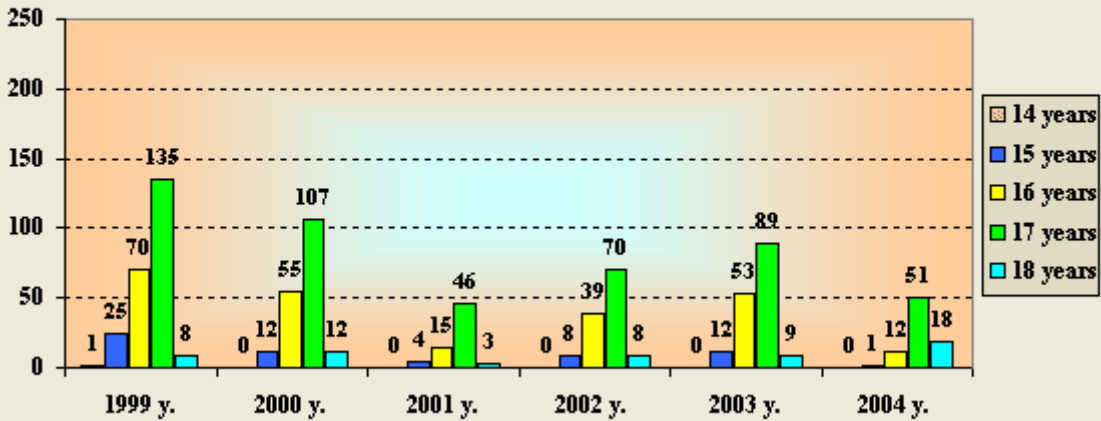


AVERAGE LISTED CONVICT NUMBER IN KAUNAS
JUVENILE PENITENTIARY
Data for 1998 - 2003



CONVICT DISTRIBUTION IN TERMS OF AGE

Data for 1999 - January 1 st 2004



JUVENILE CONVICT DISTRIBUTION IN TERMS OF OCCUPATION PRIOR TO ARRIVING TO THE CORRECTIONAL WORKS FACILITY

Data for 1999 - January 1st 2004

